

How to Make a Handwashing Station



You need:



A bottle with a screw-top lid



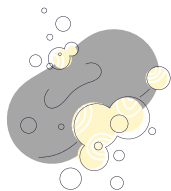
A small nail



A candle and something to light it



Soap



How to make it:

1. Empty and clean bottle.
2. Heat your nail with the candle.



Warning: The nail will get hot, hold it with pliers or a towel.

3. Poke a hole at about 2cm from the bottom of the bottle with your heated nail.



4. Fill your bottle with water and screw the lid on tightly. Water will stop leaking from the hole when the cap is tightened.



Wash your hands:



Twist open the cap until water starts to flow



Using soap, wash for 20 seconds



Twist the cap closed to stop the flow of water